



FITTING GUIDE

Prepare your workspace and ensure that you have all the tools you may need to carry out the installation.

Tools

The following list of tools are recommended when fitting but are not limited too:

- Electric Drill
- Screwdriver
- Hacksaw
- Electric Jigsaw
- Spirit Level
- Set Square
- Bradawl
- Plumb Line
- Metal Drill Bits (4mm diam.)
- Wood Drill Bits (2mm diam.)
- Wood Drill Bits (4mm diam.)
- Masonry Drill Bits (8mm diam.)
- Countersink Drill Bit
- Tape Measure

Fixings / Materials

- Masonry Wall Plugs
- Wall and MFC Fixing Screws
- Cover Caps for Screws
- Corner Blocks and/or Timber Battening (if installing end panels or interior shelving/partitions)
- Packers
- Sandpaper
- Panel adhesive
- Decorators caulk
- Masking Tape

Wall & Floor liners.

If your installation required wall & floor liners these will be installed first.

Fit the wall liners first

Mark out on the wall the depth you would like to install your doors. We recommend 600mm to ensure you have enough room for your clothes.

Using a spirit level draw a line up the wall from the bottom to the top. Our liners are 95mm, so if you are removing skirting, now cut a 97mm gap out behind the 600mm mark in order to give a slot for the liner to fit into.

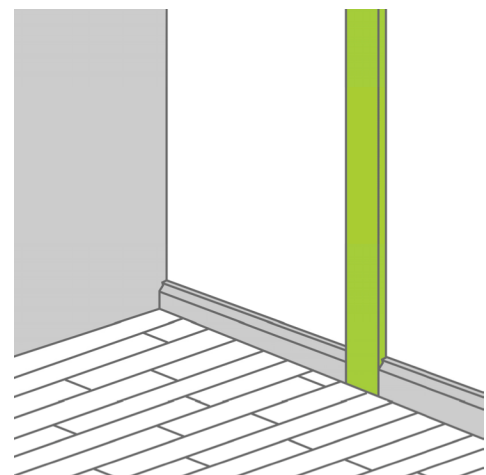
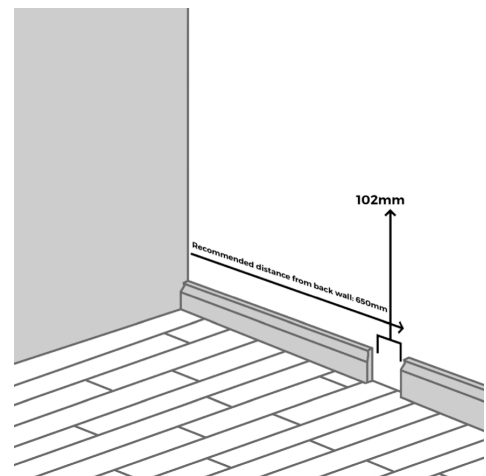
You will need to cut the liners to the ceiling height and fix it to the wall. They can be fixed with panel adhesive and or screws at 600mm centres starting 100mm in from the top and bottom & countersink screws. Whilst doing so, use your spirit level and pack where necessary to get a level finish.

Repeat on the other side if you have liners on both sides and fill gaps with decorators caulk.

THINGS TO CONSIDER

Skirting depth- our liners are 18mm thick. Therefore if your skirting is the same depth you can choose not to cut a gap out for the liner to fit into. However if the size is different we recommend cutting a gap out for it.

Coving – if you have coving, we recommend cutting a section out for the liner to go to the ceiling.





FITTING GUIDE

Fitting the bottom liners

In most instances we do not recommend you fit the bottom track and/or bottom liner directly onto carpet, fit the bottom liner onto the floorboards and then fit carpet up to it. As with the wall liners, cut the bottom liner to size. Drill holes at 600mm centres starting 100mm from the edge of the liner. Place the liner into position (between the wall liners) and once again check it is level, packing under the liner if necessary. It is important for the bottom liners to be level in order to avoid any roll away. Screw the liner down to the floorboards using flat head screws (not supplied) and make sure you countersink the screws to ensure the screw heads are flush with the liner surface.

THINGS TO CONSIDER

In situations where the bottom track is to be fitted on solid wood flooring or similar, a bottom liner might not be used.

For installations where the total opening width is greater than 2800mm you will need 2 bottom liners.

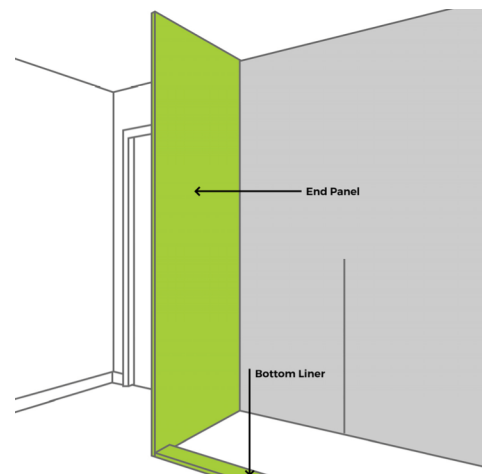
Wall to end panel installation

You should carry out the previous steps to fit the first wall liner and floor liner.

Using a spirit level mark on the wall a line where the end panel will go and cut to size.

Fit the end panel using corner brackets or panel fixing blocks (not supplied) rawl plugs may be needed to fix to the wall (not supplied).

Once fixed make sure that the end panel is level.





FITTING GUIDE

Fixing the track into place – steel doors

1. Cut the track – Carefully measure the width of the opening at top and bottom, and reduce the lengths measured by about 2-3 mm. Measure off the required track length, marking the future cut line on the tracks. Use a fine-toothed metal cutting saw to cut off the redundant part of the tracks.

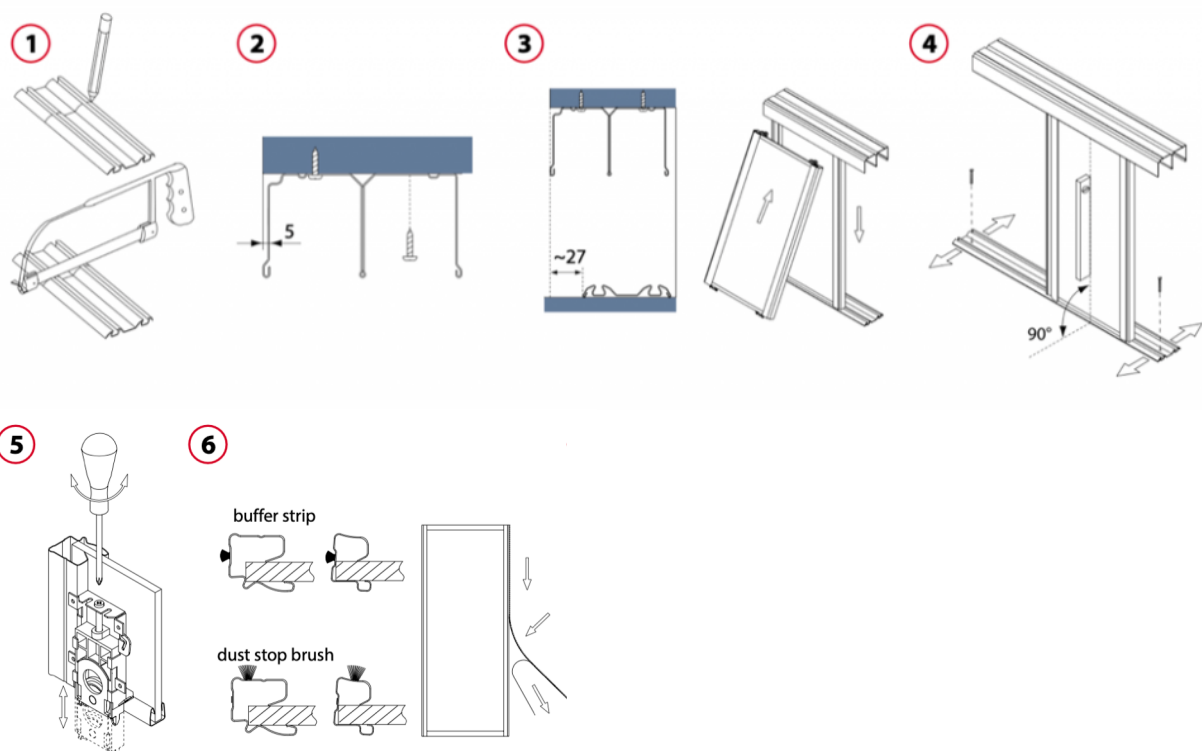
2. Fit the top track – Prepare the top track by drilling 5mm holes 600mm centres. Fix the top track with screws, offsetting its flat surface by 5 mm from the door face (inwards). Install the top track with the shade line facing forward in order to mask ceiling irregularities. If a multiple-track system is installed, fix the other tracks so that they fit tightly against each other along the entire length.

3. Install the door – Lay the bottom track on the floor, offsetting it about 27 mm from the door face (inwards). Use a Philips screwdriver and the adjusting bolt to move bottom rollers out about 10 mm. Fully insert the door leaf in the top track, taking care not to damage the bottom rollers, then align the bottom end of the door leaf with the bottom track and slowly lower the leaf, letting the rollers snap into the track guides.

4. Install the bottom track – Use a level to make sure the door is exactly plumb; move the bottom track as necessary. Check if the door travels smoothly along the entire width of the opening. Having precisely set the bottom track, fasten it to the floor. Having installed the track, put the other door leaves in their respective tracks.

5. Adjust the doors – Adjust door position by means of a Philips screwdriver and the adjusting bolts in the bottom rollers so that the doors fit tightly against the wall along the entire length. Door-to-floor clearance is adjustable between 10 and 40 mm (2 to 32 mm from the bottom track). Follow the instructions given with the delivery for the soft close installation.

6. Fix the buffer and dust-stop brush strips – Having installed the doors, remove protective backing from the door profiles. With the backing removed, you can fix the buffer strips and the dust-stop brush strips. To ensure good adhesion of the brush strips to the profiles, gently clean the profiles with alcohol or white spirit. Fix the strips, working from top to bottom. Cut off excess strip.





FITTING GUIDE

Fixing the track into place – aluminium doors

1. Cut the track – Carefully measure the width of the opening at top and bottom, and reduce the lengths measured by about 2-3 mm. Measure off the required track length, marking the future cut line on the tracks. Use a fine-toothed metal cutting saw to cut off the redundant part of the tracks.

2. Install the top track – Prepare the top track by drilling 5mm holes 600mm centres. Fix the top track with screws, offsetting its flat surface by 2 mm from the door face (inwards). Install the top track with the shade line facing forward in order to mask ceiling irregularities. If a multiple-track system is installed, fix the other tracks so that they fit tightly against each other along the entire length.

3. Fix stoppers & positioners in bottom track – If the track is to be fitted with bottom positioners and stoppers, slip them into the respective tracks before fixing. Fully insert the door leaf in the top track, taking care not to damage the bottom rollers, then align the bottom end of the door leaf with the bottom track and slowly lower the leaf, letting the rollers snap into the tracks.

4. Install the door – Lay the bottom track on the floor, offsetting it from the door face (inwards) by 11mm. If the track is to be fitted with bottom positioners, slip them into the respective tracks before fixing. Fully insert the door leaf in the top track, taking care not to damage the bottom rollers, then align the bottom end of the door leaf with the bottom track and slowly lower the leaf, letting the rollers snap into the tracks.

5. Install the bottom track – Use a level to make sure the door is exactly plumb; move the bottom track as necessary. Check if the door travels smoothly along the entire width of the opening. Having precisely adjusted the door position, install the other door leaves in their respective tracks.

6. Adjust the door position – Adjust door position by means of the adjusting bolts in the bottom rollers so that the doors fit tightly against the wall along the entire length. Door-to-floor clearance is adjustable between 11 and 20 mm (3 to 12 mm from the bottom track). Follow the instructions given to fit the soft closers.

